



iShelter iTX™

Next Generation Data Center - the iTX

Engineered, Delivered and Deployed Quickly

Engineered as a finished, rack or server ready iTX, individual sections or 'Decks' are pre-configured at our off-site facility, then shipped and assembled onsite. The result is a cost effective, turnkey iTX tailored to meet project specifications and operational in a fraction of the time.



Pre-configured at our plant in South Carolina

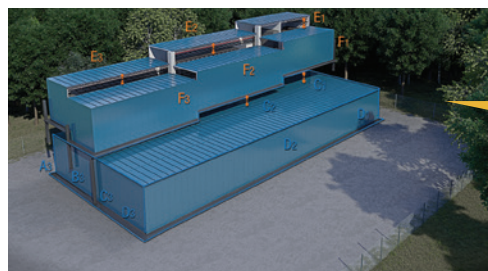
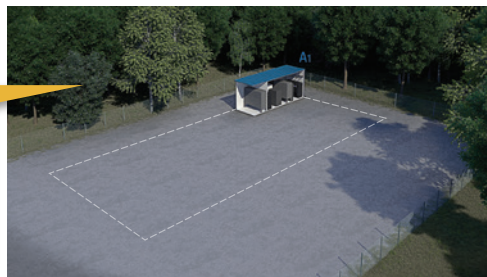


Decks are shipped to your approved site and assembled

The First of Its Kind, Mission Critical, Turnkey Solution

Delivered as a series of sequential decks and assembled onsite, the iFortress iShelter iTX is iFortress' iTX system with infinite configuration options. This flexibility is an inherent benefit; future reconfiguration is simplified and non-disruptive. iFortress' iTX provides unlimited scalability, an elastic architecture that is the first of its kind to meet International Building Code (IBC) and Life Safety (NFPA/ASTM International) standards for exterior structures.

Decks arrive numbered and according to pre-determined configuration



Future expansion is made easy and non-disruptive

Infinite Configurations

The possibilities for location and size are virtually endless, and specifying configurations is easy.



Unsurpassed Standards of the MCF Series iFortress™

1. The finished structure will be a fully rated, self-contained, airtight, water and hermetically sealed, energy efficient, re-usable, "Green" facility/assembly, that tested as an assembly, complies with:

Structural - IBC Exterior Building Code

- i. Roof Load – minimum 40 Lb/Ft²
- ii. Wind Load – minimum 2 hour 75 mph sustained force
- iii. Bending Stresses – minimum 13,000 lbs psi
- iv. Seismic – Site Class D
- v. Blast - minimum 11.5 psi/102 ms
- vi. Sound Transfer Classification – minimum STC 30

Fire/Thermal

- i. Walls, Ceiling, Doors, Penetrations – Fully Rated Assembly against ASTM E119 - minimum 90 minutes
- ii. Door NFPA 252 90 minute rating
- iii. R value – Assembly – minimum R 22

Hydrodynamics/Permeability

- i. Airtight – NFPA 2001: Time (Size Dependent)
 - a. Annually recertified
- ii. Encapsulation – ASTM E 1795-97 *
- iii. Mildew Resistant – ASTM D3273/3274 *

- iv. Permeability – ASTM D 1653 *
- v. Weathering – ASTM G53/B 117 – Federal TT-C-555B *
- vi. Humidity – ASTM D 4585 *
- vii. ASTM E119 – Hose Stream Test

Environmental

- i. "Green" – Recyclable materials and 100% recycled steel can be disassembled and relocated, re-used
- ii. Insulated – energy efficient
- iii. LEED component contributor – innovation points, reduce operating cost, non-invasive field assembly (i.e. dust free assembly)

Warranty

- i. Conditional Lifetime
- a. Subject to annual recertified by Factory Authorized Agent

2. Interior Walls/Ceiling:

- i. Finish
 - a. High reflectance white – minimum 85% reflectance quality
 - b. Reduction in light emanating sources/equipment/power consumption

