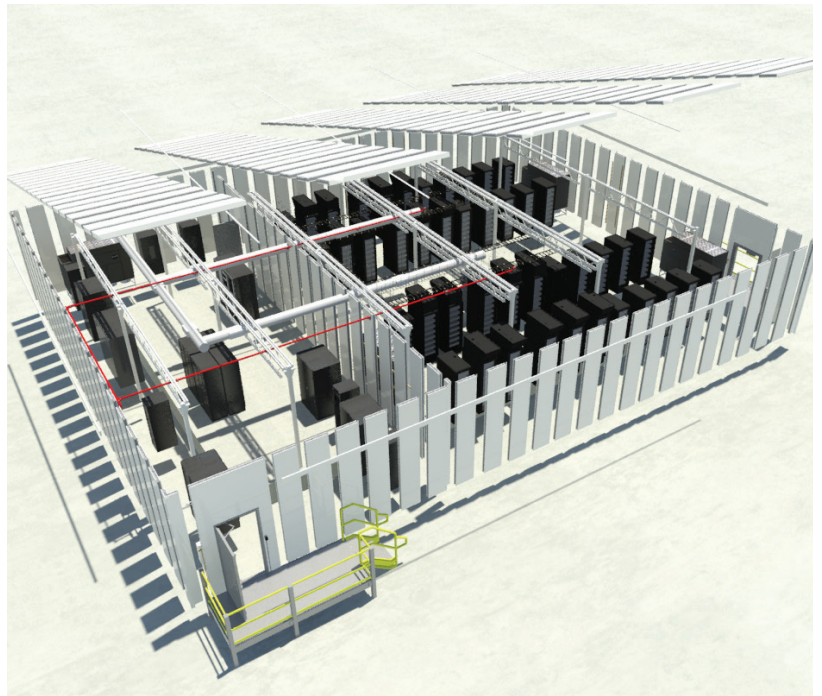




iFortress' iTX™: Innovations in Data Center Solutions

In today's world, no two data centers are alike - We have been led to believe each one is an engineered "snowflake"; unique, like no other. iFortress and other key technology players have created the next generation data center, a location independent, adaptable and secure IT environment that defines customization. iFortress' iTX (Information and Technology Exchange) is based on the iFortress system of interlocking panels and pre-engineered turnkey solutions that enables a business to acquire their iTX as an appliance.



The iFortress interlocking panel technology introduces location autonomy to the data center model, enabling iFortress' iTX to be constructed outside in a parking lot, on rooftops or brownfield locations, inside a warehouse, or in hard-to-reach areas such as caves or mines. The panel system offers unlimited configuration choices, the ability to expand or reduce the size of the iTX, and the option to relocate the data with the business. The iTX is assembled on-site and once complete, is hermetically sealed, air and water tight and impervious to extreme weather conditions, fire and unauthorized entry.

Assembled to Order

iFortress' iTX begins with customer specifications and ends with a complete turnkey solution. The basic design criteria needed to determine your pre-engineered solution are :

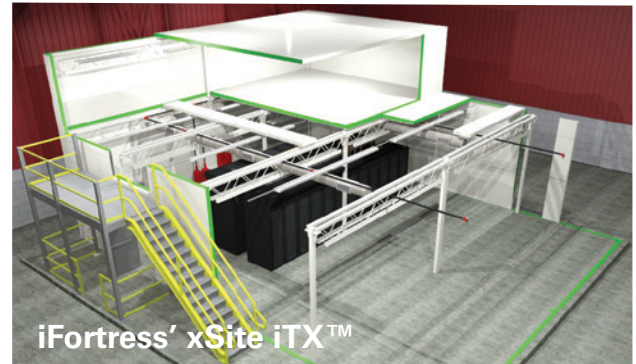
Available square footage of space/area	Interior or exterior location	Number of racks	Power load per rack (kW)	Electrical redundancy N1, N2, or 2N	Mechanical redundancy N1, N2, or S+S
----------------------------------------	-------------------------------	-----------------	--------------------------	-------------------------------------	--------------------------------------

Two application options are available for iFortress' iTX

All of iFortress' iTX solutions meet and exceed the International Building Code (IBC) and life safety standards (NFPA/ASTM International) for exterior buildings.



The iShelter iTX™ is designed for exterior or brownfield locations. It is pre-configured at an off-site facility and shipped in a series of interlocking decks to be sequentially linked to create a singular assembly at the designated site.



The xSite iTX™ is driven by accessibility and suited for the interior of office buildings, warehouses or rooftops and underground environments. All materials, parts and equipment are shipped in a pre-planned order and assembled on site according to a pre-determined schedule.

Cost-effective

iFortress' iTX is not just an investment in your IT, it is an essential part of a strategy for operating as effectively and efficiently as possible. It eliminates the need to sink capital into a fixed and inflexible facility that may or may not accommodate a company's needs for the long term. The iTX takes weeks or months to assemble as opposed to years of engineering and construction, and is adaptable to changing technology. Since it is not considered a capital improvement, property taxes remain constant, the asset can be rapidly depreciated, and can be purchased or leased. Each assembly is highly insulated and energy efficient.

eLocation: Value-added Opportunity

Today's battle lines are drawn on the issue to Outsource (Cloud) or keep the operation "In-house" as an Enterprise data center. Both options have benefits as well as disadvantages, and either position is equally defensible. With the iTX, iFortress is offering a third option. eLocation lets you run your IT operation as an outsourced "On-premise" solution. Providing that you have room within or near your facility, iFortress will erect an iTX to your needs and specifications, and manage as well as maintain that iTX for you. Find out how you can become an iFortress eLocation member.

The iFortress iTX Advantage

Through collaboration with industry leaders, iFortress has brought a truly customizable solution to market and turned what had been a complicated and costly undertaking into a rack or server ready appliance that meets customer needs today and tomorrow.

